



Cleaved-GGT4 HC (T472) Polyclonal Antibody

Catalog No	YP-Ab-03353
Isotype	IgG
Reactivity	Human;Mouse;Rat
Applications	WB;ELISA
Gene Name	GGT7
Protein Name	Gamma-glutamyltransferase 7
Immunogen	The antiserum was produced against synthesized peptide derived from human Gamma-glutamyltransferase 4. AA range:423-472
Specificity	Cleaved-GGT4 HC (T472) Polyclonal Antibody detects endogenous levels of fragment of activated GGT4 HC protein resulting from cleavage adjacent to T472.
Formulation	Liquid in PBS containing 50% glycerol, 0.5% BSA and 0.02% sodium azide.
Source	Polyclonal, Rabbit,IgG
Purification	The antibody was affinity-purified from rabbit antiserum by affinity-chromatography using epitope-specific immunogen.
Dilution	Western Blot: 1/500 - 1/2000. ELISA: 1/10000. Not yet tested in other applications.
Concentration	1 mg/ml
Purity	≥90%
Storage Stability	-20°C/1 year
Synonyms	GGT7; GGTL3; GGTL5; Gamma-glutamyltransferase 7; GGT 7; Gamma-glutamyltransferase-like 3; Gamma-glutamyltransferase-like 5; Gamma-glutamyltranspeptidase 7; Glutathione hydrolase 7
Observed Band	50kD
Cell Pathway	Membrane ; Single-pass type II membrane protein .
Tissue Specificity	Widely expressed, but at low level, except in the airway epithelial cells. Detected in brain, heart, kidney, liver, lung, spleen, testis and trachea.
Function	catalytic activity:(5-L-glutamyl)-peptide + an amino acid = peptide + 5-L-glutamyl amino acid.,function:Cleaves glutathione conjugates.,pathway:Sulfur metabolism; glutathione metabolism.,similarity:Belongs to the gamma-glutamyltransferase family.,subunit:Heterodimer composed of the light and heavy chains. The active site is located in the light chain (By similarity). Isoform 3 interacts with FAM57A.,tissue specificity:Widely expressed, but at low level, except in the airway epithelial cells. Detected in brain, heart, kidney, liver, lung, spleen, testis and trachea.,
Background	This gene is a member of a gene family that encodes enzymes involved in both the metabolism of glutathione and in the transpeptidation of amino acids. Changes in the activity of gamma-glutamyltransferase may signal preneoplastic or



toxic conditions in the liver or kidney. The protein encoded by this gene consists of a heavy and a light chain, and it can interact with CT120, a plasma membrane-associated protein that is possibly involved in lung carcinogenesis. [provided by RefSeq, Jul 2008],

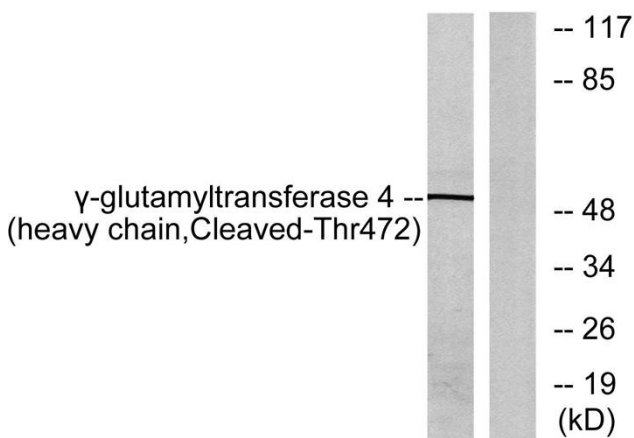
matters needing attention

Avoid repeated freezing and thawing!

Usage suggestions

This product can be used in immunological reaction related experiments. For more information, please consult technical personnel.

Products Images



Western blot analysis of lysates from Jurkat cells, treated with etoposide 25uM 24h, using Gamma-glutamyltransferase 4 (heavy chain, Cleaved-Thr472) Antibody. The lane on the right is blocked with the synthesized peptide.